

TIMBER PROCESSING SOLUTIONS



STANDARD & CUSTOM ELECTRIC ACTUATORS

Electric Actuator Solutions for the Timber Processing Industry

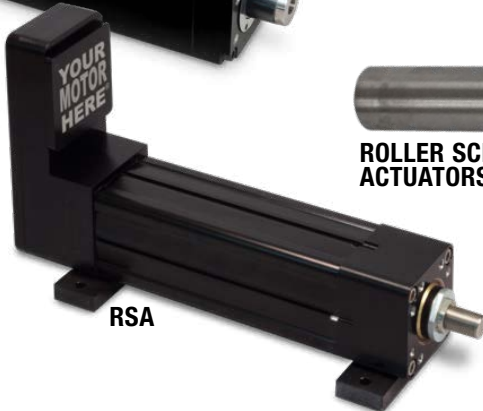
Tolomatic's electric actuators are designed for heavy-duty, rugged use. With roller screws as the main driver, Tolomatic actuators outperform hydraulic alternatives with longer life, better accuracy/repeatability and leak-free performance for operation in environmentally sensitive conditions. With little to no maintenance, they perform consistently in hot or cold temperatures and offer the lowest cost of ownership when compared to hydraulic systems.



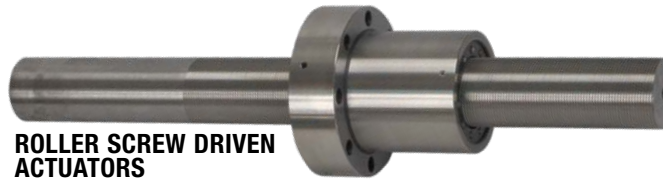
IMA: MOTOR FILES FOR ROCKWELL AUTOMATION AND A VARIETY OF OTHER DRIVE MANUFACTURERS



RSH: 316 STAINLESS STEEL, IP69K



RSA



ROLLER SCREW DRIVEN ACTUATORS



RSX: HIGH FORCE WITH OPTIONAL OIL COOLING FOR INCREASED DUTY CYCLE

FEATURING ANTI-ROTATE & FLEXIBLE MOTOR MOUNTING

TOLOMATIC'S ELECTRIC ROD-STYLE ACTUATORS

	ERD	RSH	RSA	RSX	GSA	IMA
	Rod-Style Actuator	Hygienic Rod-Style Actuator	Rod-Style Actuator	Rod-Style Actuator	Guided Rod-Style Actuator	Integrated Servo Actuator
Force up to:	2.2 kN (500 lbf)	35 kN (7,943 lbf)	58 kN (13,039 lbf)	294 kN (66,000 lbf)	18.5 kN (4,160 lbf)	35.8 kN (8,044 lbf)
Speed up to:	1,016 mm/sec (40 in/sec)	498 mm/sec (19.6 in/sec)	3,124 mm/sec (123 in/sec)	760 mm/sec (29.9 in/sec)	3,124 mm/sec (123 in/sec)	1,334 mm/sec (52.5 in/sec)
Stroke Length up to:	609 mm (24 in)	1,219 mm (48 in)	1,524 mm (60 in)	1,500 mm (59 in)	914 mm (36 in)	457 mm (18 in)
Screw/Nut Type	Solid & Ball	Ball & Roller	Solid, Ball & Roller	Ball & Roller	Solid & Ball	Ball & Roller
<i>For complete information see www.tolomatic.com or literature number:</i>						
Literature Number:	2190-4000	2100-4010	3600-4166	2171-4001	3600-4231	2700-4000

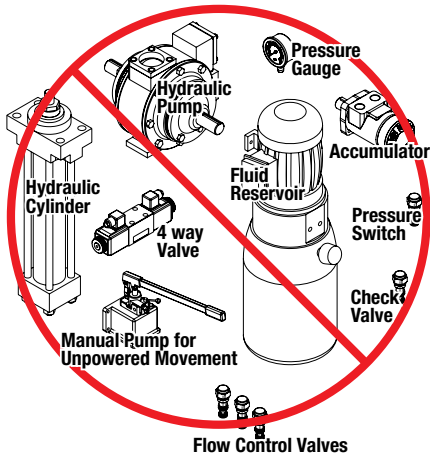
(Not all models deliver maximum values listed, i.e.: Maximum thrust may not be available with maximum speed)

MORE FEATURES/OPTIONS

	Patented re-lubrication system with High / low temperature grease available
	Ingress protection rating of IP65, IP67 & IP69K available
	White epoxy paint & stainless steel for corrosion resistance
	Optional manual override design
	Compact, lightweight designs
	Shock, vibration, temperature & humidity tested

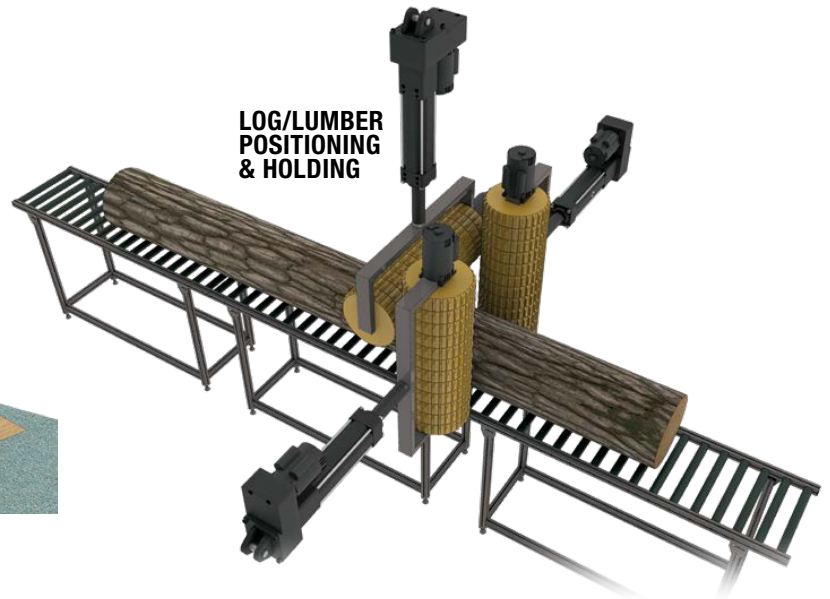
Electric Actuator Solutions for the Timber Processing Industry

BENEFITS OF ELECTRIC ACTUATORS vs. HYDRAULIC CYLINDERS:

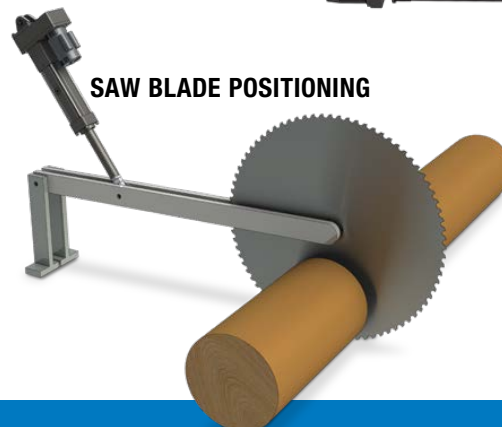


- Lowest total cost of ownership
- Precise position, speed, acceleration & force control
- Little to no maintenance
- Cleaner, more efficient operation
- Eliminates costly, messy leaks that contaminate the environment & product
- Eliminates large hydraulic power unit and many associated hydraulic components - fewer failure points
- No warm-up period in cold temperatures
- Longer life
- Improved accuracy & repeatability

APPLICATIONS:



- Hydraulic replacement
- Pneumatic replacement
- Saw blade positioning
- "Pineapple" roll positioning
- Fence guide positioning
- Planer mill roll positioning
- Lifting/pushing/stacking
- Positioning & holding
- Veneer lathe
- Dispensing adhesive for plywood & laminates
- and more



The Tolomatic Difference Expect More From the Industry Leader:



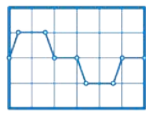
INNOVATIVE PRODUCTS

Solutions with Endurance TechnologySM for challenging applications.



FAST DELIVERY

Built-to-order with configurable stroke lengths and flexible mounting options.



ACTUATOR SIZING

Size and select electric actuators with our online software.



YOUR MOTOR HERE[®]

Match your motor to compatible mounting plates with Tolomatic actuators.



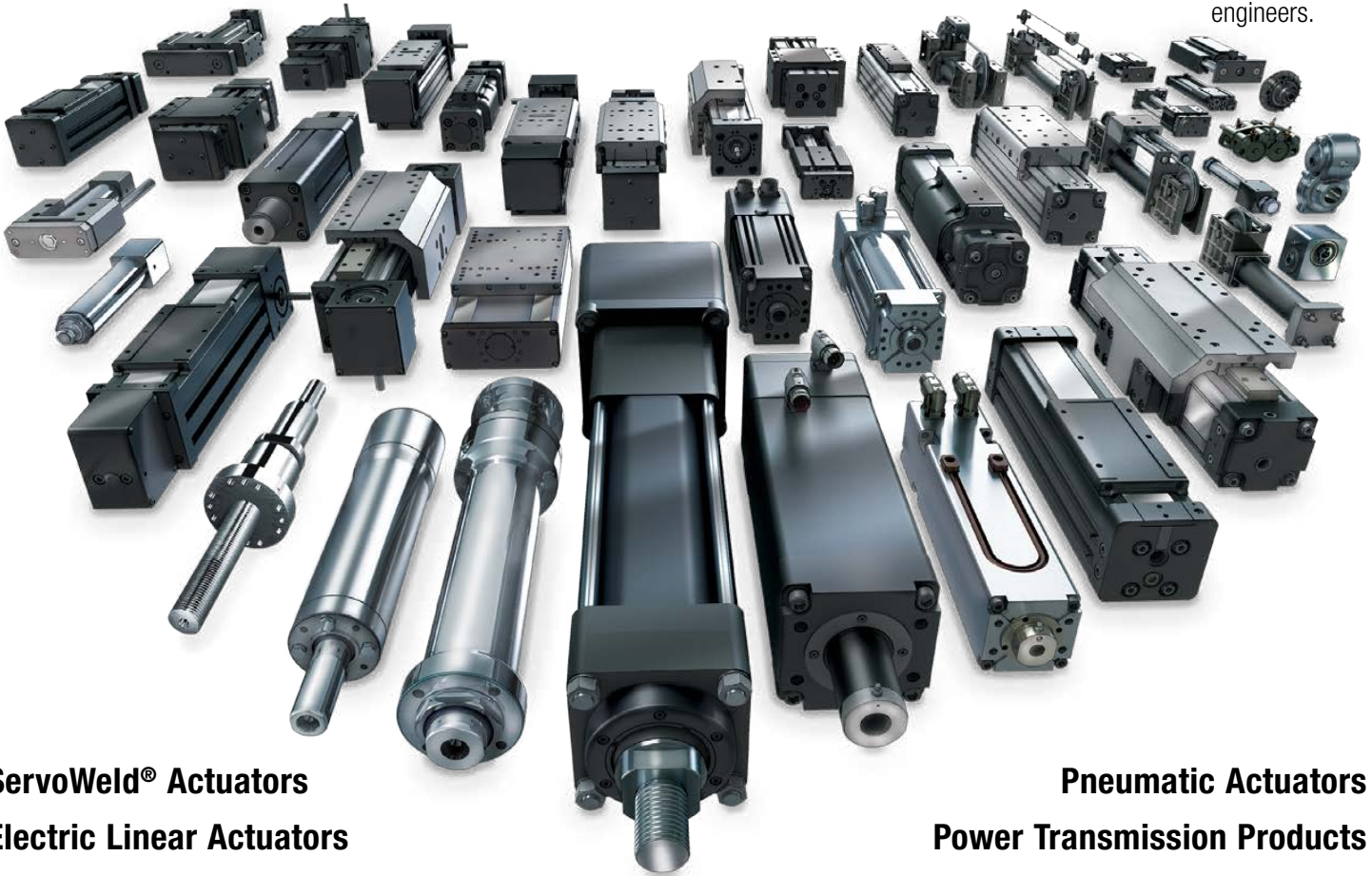
CAD LIBRARY

Download 2D or 3D CAD files for Tolomatic products.



TECHNICAL SUPPORT

Get a question answered or request a virtual design consultation with one of our engineers.



ServoWeld[®] Actuators
Electric Linear Actuators

Pneumatic Actuators
Power Transmission Products



MADE IN U.S.A.

TolomaticTM

EXCELLENCE *IN MOTION*

COMPANY WITH
QUALITY SYSTEM
CERTIFIED BY DNV
= ISO 9001 =
Certified site: Hamel, MN

USA - Headquarters

Tolomatic Inc.

3800 County Road 116
Hamel, MN 55340, USA
Phone: (763) 478-8000
Toll-Free: **1-800-328-2174**
sales@tolomatic.com
www.tolomatic.com

MEXICO

Centro de Servicio

Parque Tecnológico Innovación
Int. 23, Lateral Estatal 431,
Santiago de Querétaro,
El Marqués, México, C.P. 76246
Phone: +1 (763) 478-8000
help@tolomatic.com

EUROPE

Tolomatic Europe GmbH

Elisabethenstr. 20
65428 Rüsselsheim
Germany
Phone: +49 6142 17604-0
help@tolomatic.eu
www.tolomatic.com/de-de

CHINA

Tolomatic Automation Products (Suzhou) Co. Ltd.

No. 60 Chuangye Street, Building 2
Huqiu District, SND Suzhou
Jiangsu 215011 - P.R. China
Phone: +86 (512) 6750-8506
Tolomatic_China@tolomatic.com

All brand and product names are trademarks or registered trademarks of their respective owners. Information in this document is believed accurate at time of printing. However, Tolomatic assumes no responsibility for its use or for any errors

that may appear in this document. Tolomatic reserves the right to change the design or operation of the equipment described herein and any associated motion products without notice. Information in this document is subject to change without notice.

Visit www.tolomatic.com for the most up-to-date technical information